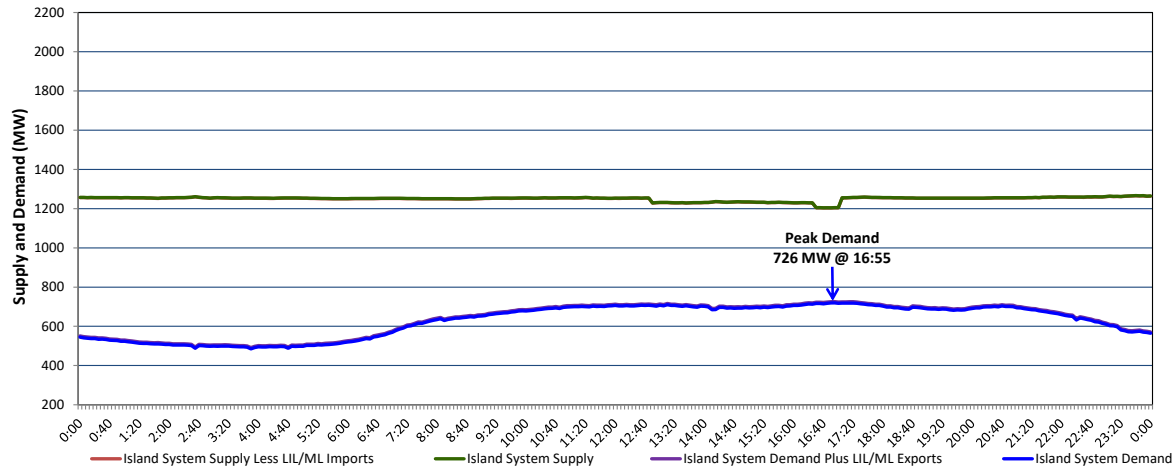


**Newfoundland Labrador Hydro (NLH)
Supply and Demand Status Report Filed Thursday, September 01, 2022**

**Section 1
Island Interconnected System Supply, Demand & Exports
Actual 24 Hour System Performance For Wednesday, August 31, 2022**



Supply Notes For August 31, 2022

- A As of 0857 hours, April 04, 2022, Holyrood Unit 3 unavailable due to planned outage (150 MW).
- B As of 1327 hours, May 08, 2022, Bay d'Espoir Unit 6 unavailable due to planned outage (76.5 MW).
- C As of 0800 hours, June 08, 2022, Holyrood Unit 1 unavailable due to planned outage (170 MW).
- D As of 0210 hours, July 03, 2022, Bay d'Espoir Unit 5 unavailable (76.5 MW).
- E As of 0800 hours, July 31, 2022, Holyrood Unit 2 unavailable due to planned outage 150 MW (170 MW).
- F As of 0651 hours, August 22, 2022, Hinds Lake Unit unavailable due to planned outage (75 MW).
- G At 1248 hours, August 31, 2022, Hardwoods Gas Turbine available at 25 MW (50 MW).
- H At 1627 hours, August 31, 2022, Hardwoods Gas Turbine unavailable 25 MW (50 MW).
- I At 1703 hours, August 31, 2022, Hardwoods Gas Turbine available (50 MW).

**Section 2
Island Interconnected Supply and Demand**

Thu, Sep 01, 2022	Island System Outlook ³	Seven-Day Forecast	Temperature (°C)		Island System Daily Peak Demand (MW)	
			Morning	Evening	Forecast	Adjusted ⁷
Available Island System Supply: ⁵	1,408 MW	Thursday, September 1, 2022	21	19	1,075	1,075
NLH Island Generation: ^{4,8}	975 MW	Friday, September 2, 2022	21	21	750	750
NLH Island Power Purchases: ⁶	100 MW	Saturday, September 3, 2022	17	16	700	700
Other Island Generation:	215 MW	Sunday, September 4, 2022	15	14	720	720
ML/LIL Imports:	118 MW	Monday, September 5, 2022	14	15	725	725
Current St. John's Temperature & Windchill:	20 °C	Tuesday, September 6, 2022	15	14	775	775
7-Day Island Peak Demand Forecast:	1,075 MW	Wednesday, September 7, 2022	16	15	750	750

Supply Notes For September 01, 2022

- Notes:
- Generation outages for running and corrective maintenance are included. These are not unusual for power system operations. They generally do not impact customer supply. The power system operators schedule outages to system equipment whenever possible to coincide with periods when customer demands are low and sufficient supply reserves are available. However, from time to time equipment outages are necessary and reserves may be impacted.
 - Due to the Island system having no synchronous connections to the larger North American grid, when there is a sudden loss of large generating units there may be a requirement for some customer's load to be interrupted for short periods to bring generation output equal to customer demand. This automatic action of power system protection, referred to as under frequency load shedding (UFLS), is necessary to ensure the integrity and reliability of system equipment. Under frequency events have typically occurred 5 to 8 times per year on the Island Interconnected System and the resultant customer load interruptions are generally less than 30 minutes. With the activation of the Maritime Link frequency controller during the winter of 2018, UFLS events have occurred less frequently.
 - As of 0800 Hours.
 - Gross output including station service at Holyrood (24.5 MW) and improved NLH hydraulic output due to water levels (35 MW).
 - Gross output from all Island sources (including Note 4).
 - NLH Island Power Purchases include: CBPP Co-Gen, Nalcor Exploits, Rattle Brook, Star Lake, Wind Generation and capacity assistance (when applicable).
 - Adjusted for curtailable load, market activities and the impact of voltage reduction when applicable.
 - Due to limitations inherent in the design of combustion turbines, the output of combustion turbines may be reduced in the event that ambient temperatures exceed the threshold

**Section 3
Island Peak Demand Information
Previous Day Actual Peak and Current Day Forecast Peak**

Wed, Aug 31, 2022	Actual Island Peak Demand ⁹	16:55	726 MW
Thu, Sep 01, 2022	Forecast Island Peak Demand		1,075 MW

- Notes: 9. Island Demand / LIL / ML Exports (where applicable) is supplied by NLH generation and purchases, plus generation owned and operated by Newfoundland Power and Corner Brook Pulp & Paper (Deer Lake Power, DLP).